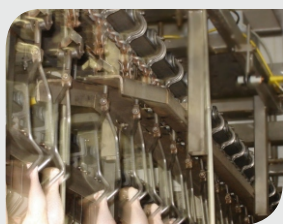
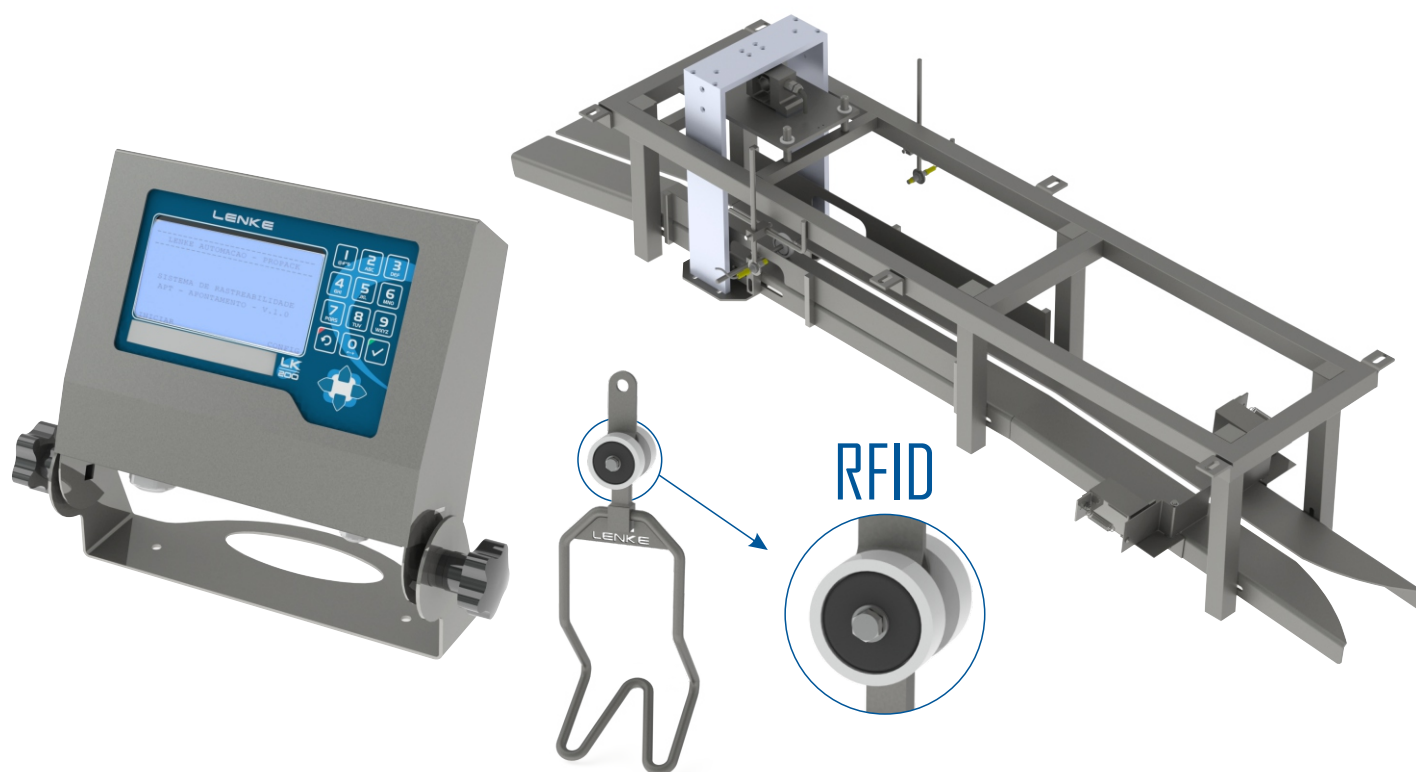


Lenke Classification of Weights CPL-12000



- High accuracy in weighing
- Capacity for 12.000 birds / hour
- Strong construction in stainless steel

LENKE

www.lenke.com.br
www.lenkeautomacao.com.br

Lenke Classification of Weights for whole chicken (griller) CPL-12000

LENKE

Lenke's grader brings the innovation of RFID emitters in the shackles as an option, increasing the precision when dropping the birds. RFID readers are positioned next to each drop station, ensuring an exact drop that does not depend on the quality of the chain, bringing an extremely reliability to the grading system.

Software

The CPL-12000's software has many resources and options as the classification by weight range, percentile distribution, number of portions per minute and A-B quality. Histograms with production data allow a clear visualization of what has been produced during a certain period and the data can be exported to a database for recording and further analysis. This information can be used for integration and performance analysis, and the integration with other systems is also possible.

Robustness

The Overhead in-line Grader CPL-12000 is made out of the best available components and each part of the machine has been designed considering continuous use, in two or even three daily shifts. The components are made of stainless steel and non-corrodible material. The machine perfectly stands the typical humid environment of slaughterhouses.

Productivity

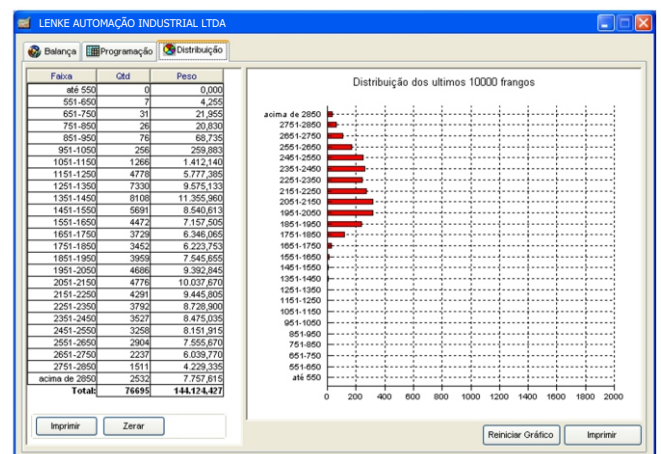
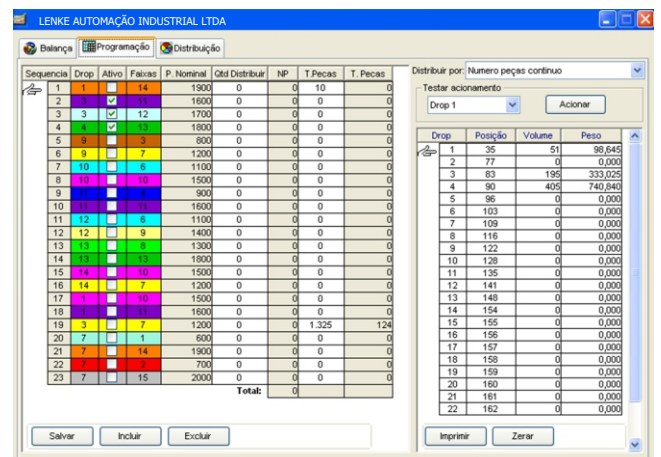
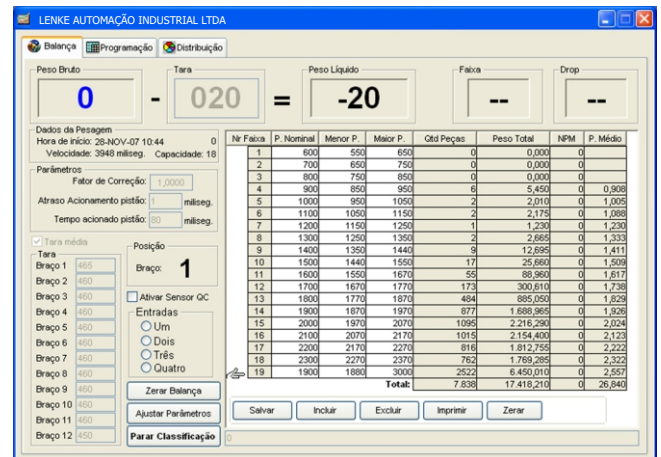
The capacity of the CPL-12000 is of up to 12 mil birds/hour with the 12-packing-stations scale.

Maintenance

The equipment's maintenance is simple and the project is compact, reducing components to the minimum necessary. The software interface was designed to ease its use.

Accuracy

Lenke's CPL-12000 relies on the most modern weight detection technology, assuring 10g accuracy for the 10 thousand birds/hour capacity and 20g for the 20 thousand birds/hour capacity.



Tubarão-SC Rua Simeão Esmeraldino de Menezes, 400 Sl.33 CEP 88704-090 **Tel.: (48) 3301.4000**

São Paulo-SP Rua Professor João Marinho, 193 CEP 04.007-010 **Tel.: (11) 3884.4266**

www.lenke.com.br

www.lenkeautomacao.com.br

comercial@lenke.com.br